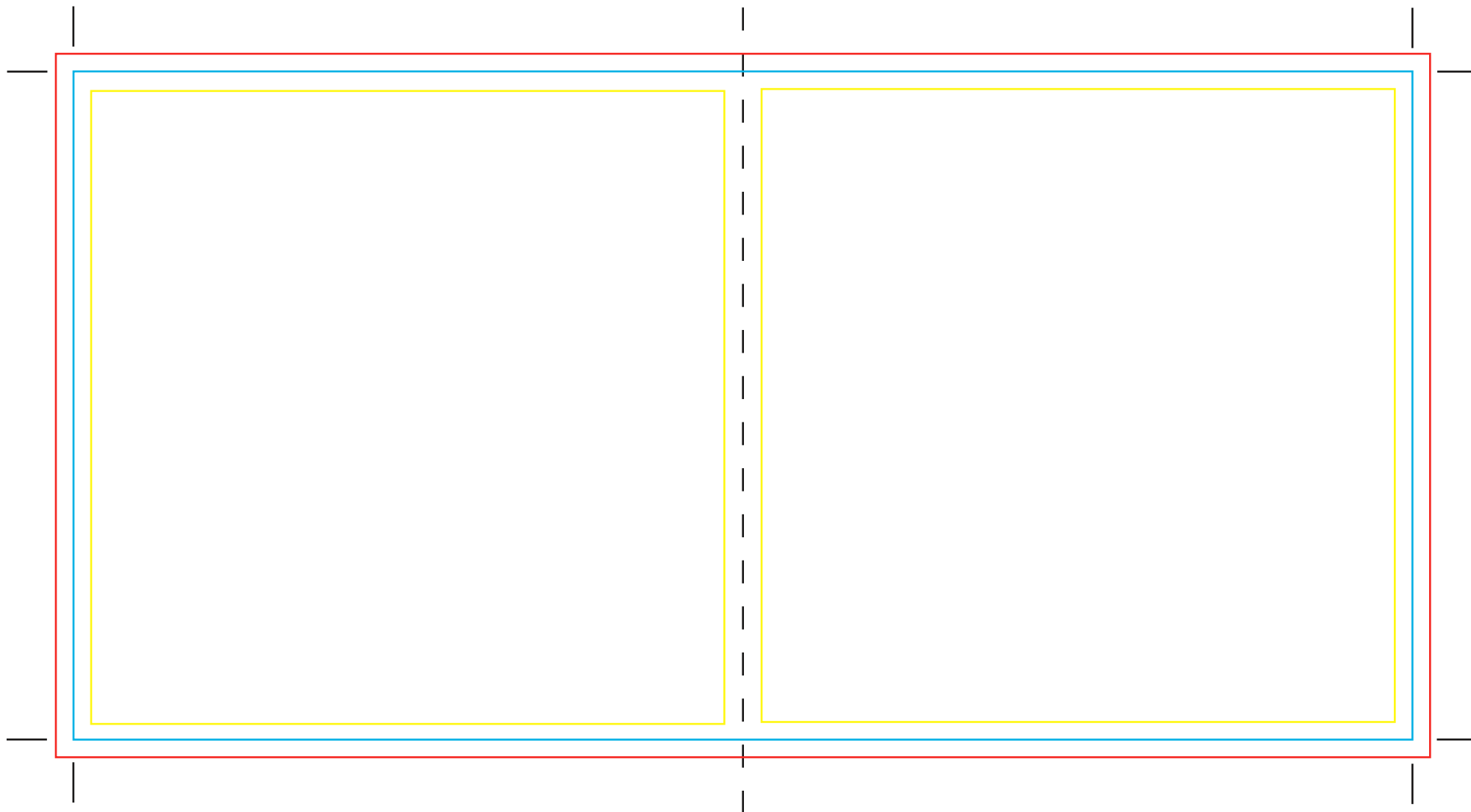
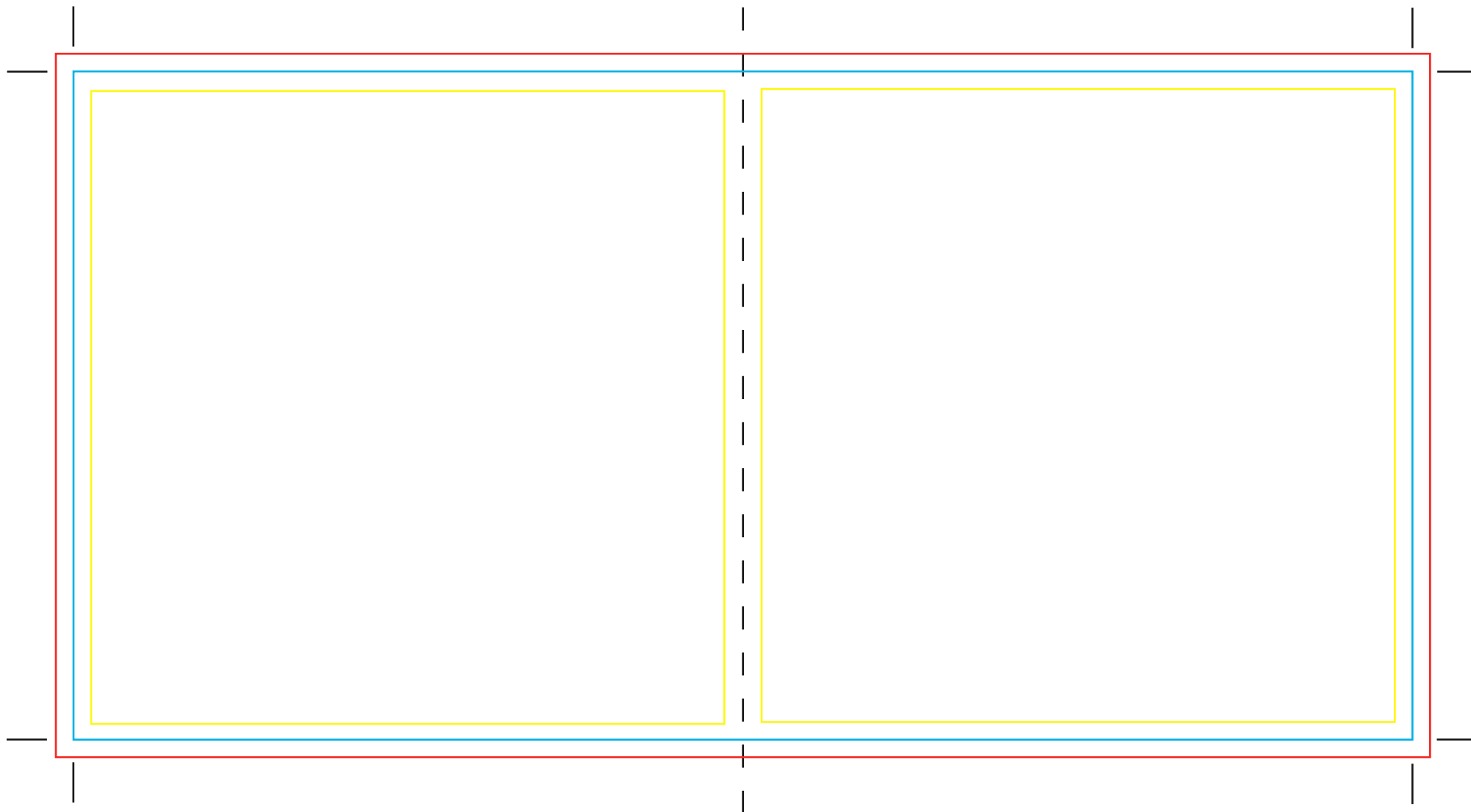


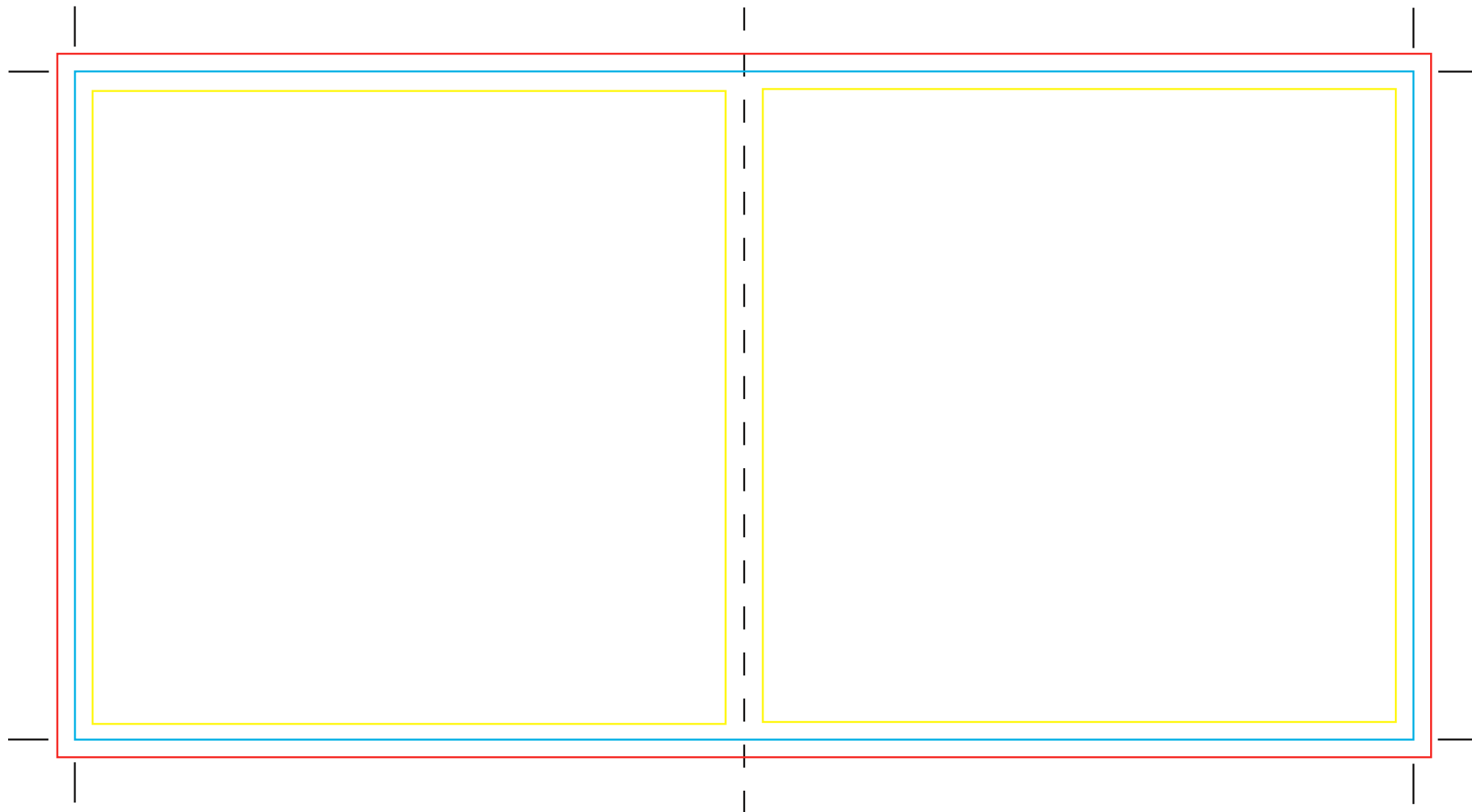
Please note: Background images should extend at least to the bleed (red) lines. Artwork will be cut at the blue lines, so we recommend keeping text and important parts of the artwork within the margin (yellow) lines. When the artwork is completed the template should be removed except for the black crop marks at the corners.



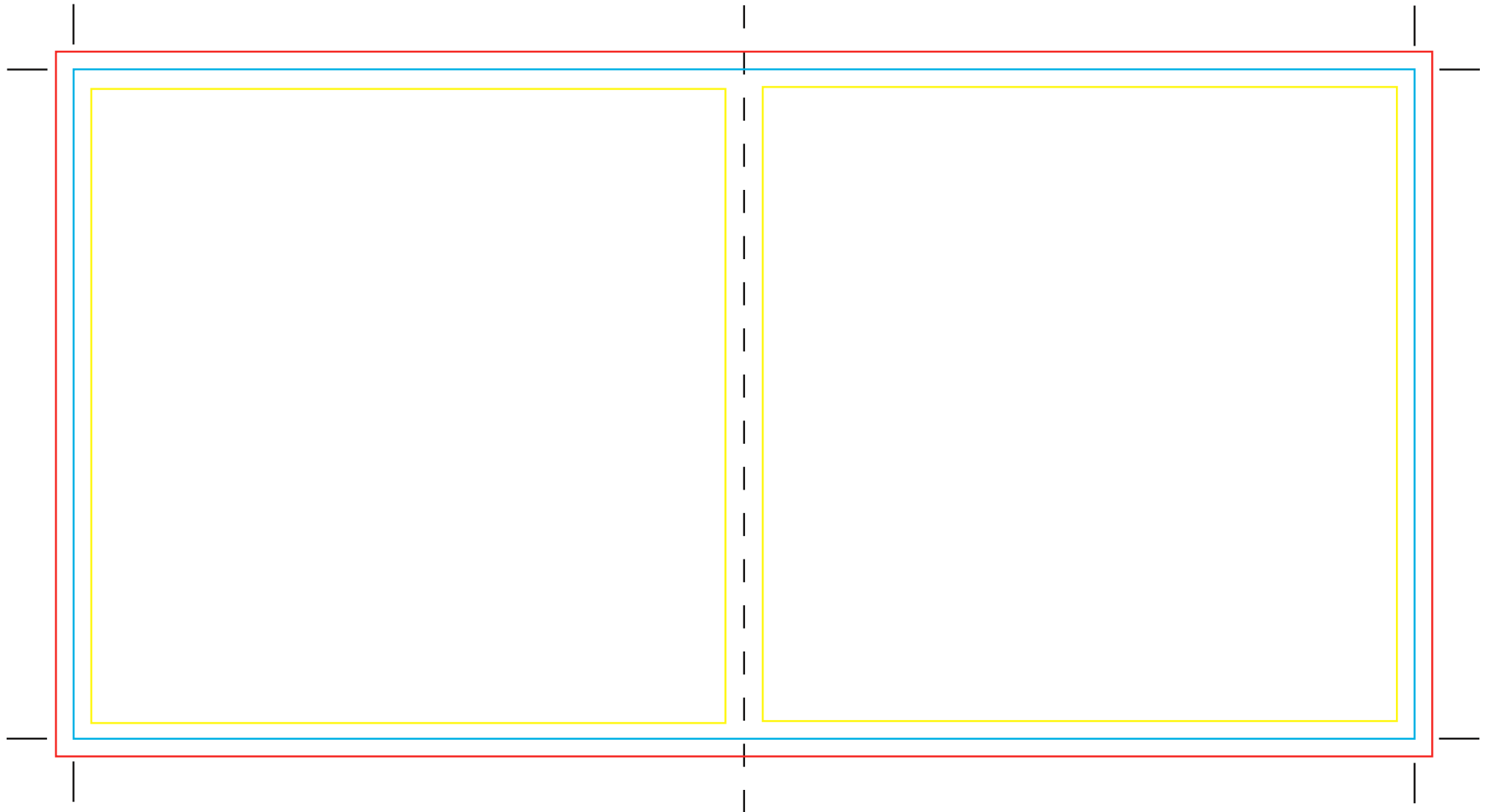
Please note: Background images should extend at least to the bleed (red) lines. Artwork will be cut at the blue lines, so we recommend keeping text and important parts of the artwork within the margin (yellow) lines. When the artwork is completed the template should be removed except for the black crop marks at the corners.



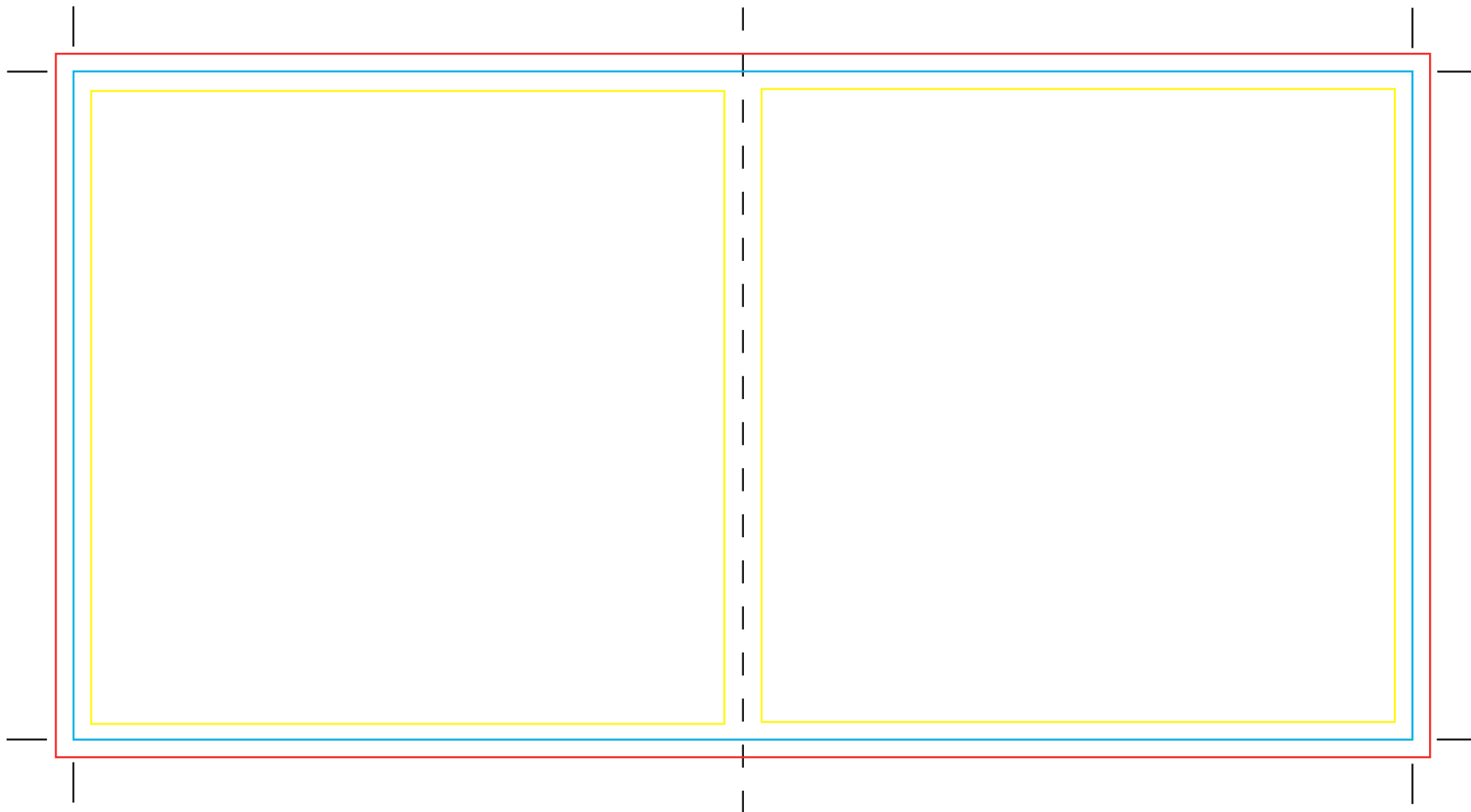
Please note: Background images should extend at least to the bleed (red) lines. Artwork will be cut at the blue lines, so we recommend keeping text and important parts of the artwork within the margin (yellow) lines. When the artwork is completed the template should be removed except for the black crop marks at the corners.



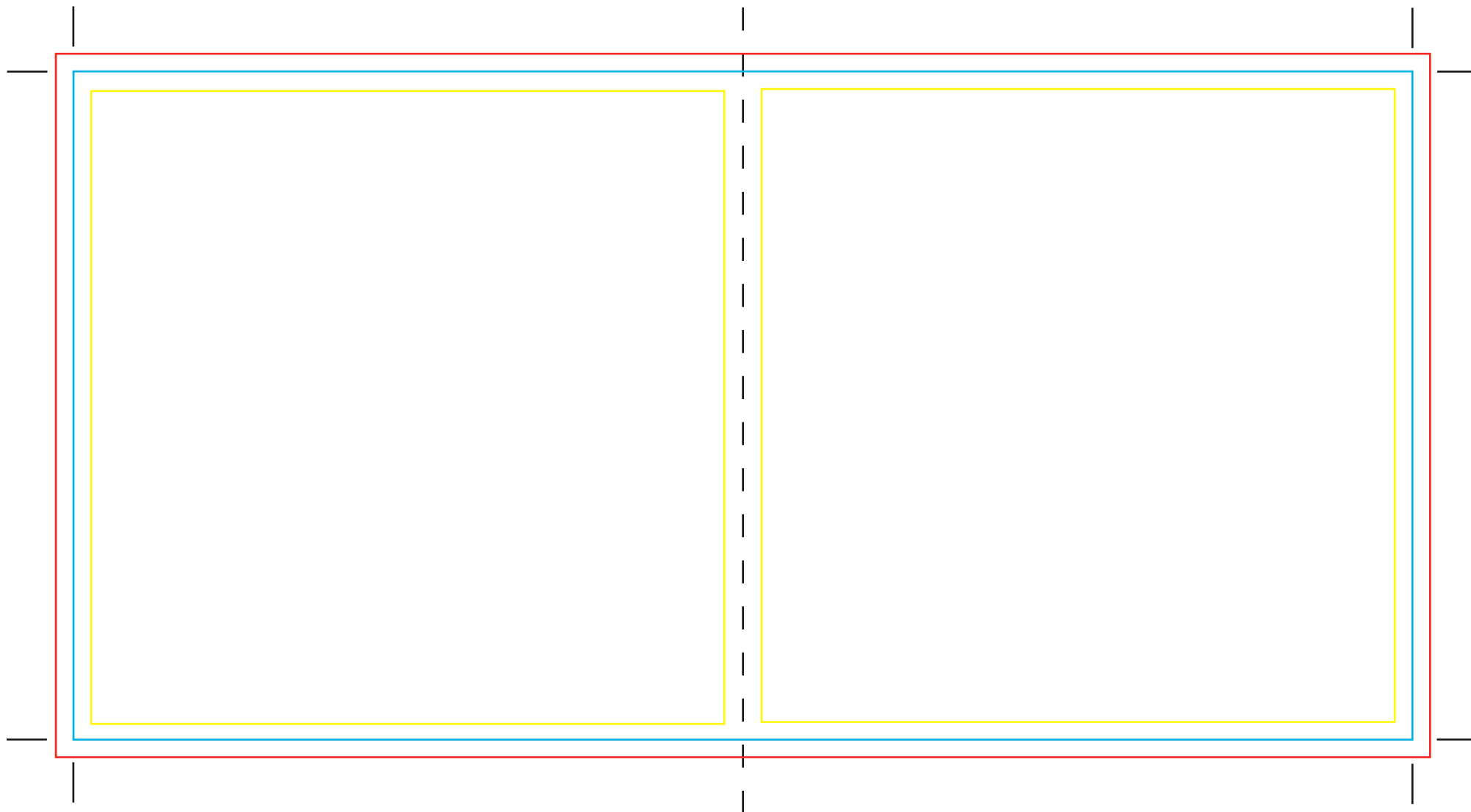
Please note: Background images should extend at least to the bleed (red) lines. Artwork will be cut at the blue lines, so we recommend keeping text and important parts of the artwork within the margin (yellow) lines. When the artwork is completed the template should be removed except for the black crop marks at the corners.



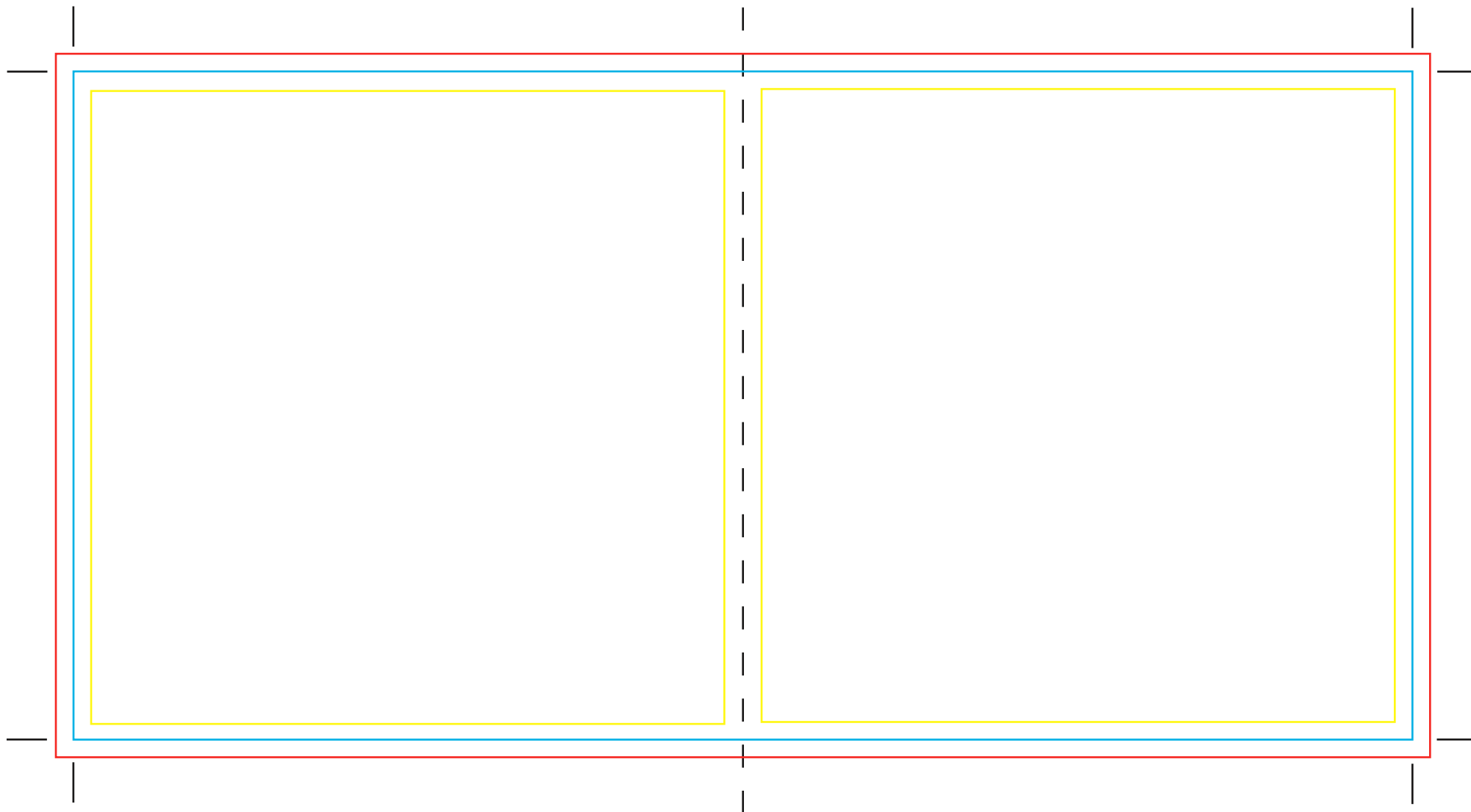
Please note: Background images should extend at least to the bleed (red) lines. Artwork will be cut at the blue lines, so we recommend keeping text and important parts of the artwork within the margin (yellow) lines. When the artwork is completed the template should be removed except for the black crop marks at the corners.



Please note: Background images should extend at least to the bleed (red) lines. Artwork will be cut at the blue lines, so we recommend keeping text and important parts of the artwork within the margin (yellow) lines. When the artwork is completed the template should be removed except for the black crop marks at the corners.



Please note: Background images should extend at least to the bleed (red) lines. Artwork will be cut at the blue lines, so we recommend keeping text and important parts of the artwork within the margin (yellow) lines. When the artwork is completed the template should be removed except for the black crop marks at the corners.



Please note: Background images should extend at least to the bleed (red) lines. Artwork will be cut at the blue lines, so we recommend keeping text and important parts of the artwork within the margin (yellow) lines. When the artwork is completed the template should be removed except for the black crop marks at the corners.